

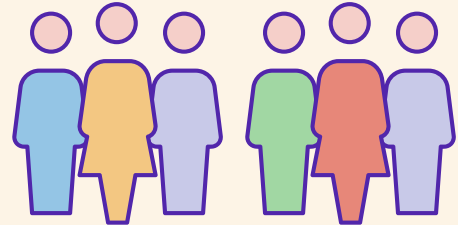


Admissions into aged care

2018-19

Almost 221,200

people entered residential, home or transition care in 2018-19



32% of people

entering aged care moved into permanent residential care



Around 20%

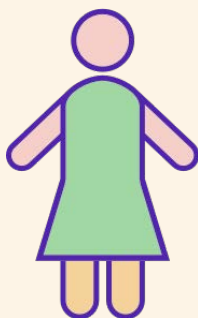
of people entering aged care used home care

Over half of people moving into permanent residential care were aged **85 years and over**



More women

entered permanent residential care than men



59%

The number of people entering home care has increased over the last 10 years by

74%

