

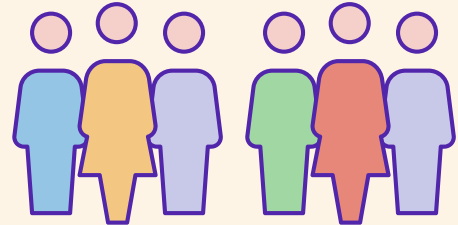


Admissions into aged care

2017-18

Over 229,000

people entered residential, home or transition care in 2017-18



2 in 3 people

entering aged care moved into residential care



23%

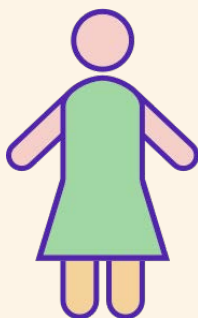
 of people entering aged care used home care

Over half

 of people moving into permanent residential care were aged **85 years and over**

Women

made up the majority of people entering permanent residential care



59%

The number of people entering home care has increased over the last 5 years by

59%

