

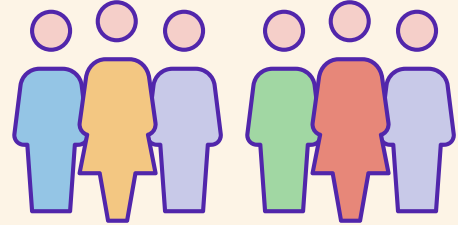


People leaving aged care

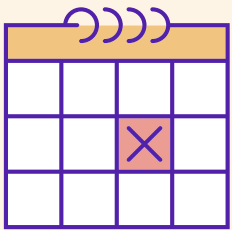
2018-19

Almost 203,000 people

exited residential aged care, home care or transition care in 2018-19



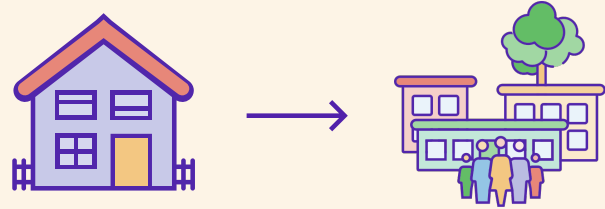
On average, people stayed



**2 years
6 months**
in permanent residential care

Over half of people

who exited home care moved into residential care



Women stayed in

permanent residential care

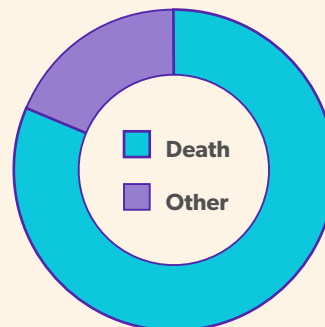


10 months longer than men

People used home care for an average of 25 months,

5 months less

than permanent residential care



83%

of people exited permanent residential care due to death